



**61-63**  
CROSBY ST  
L3 Capital

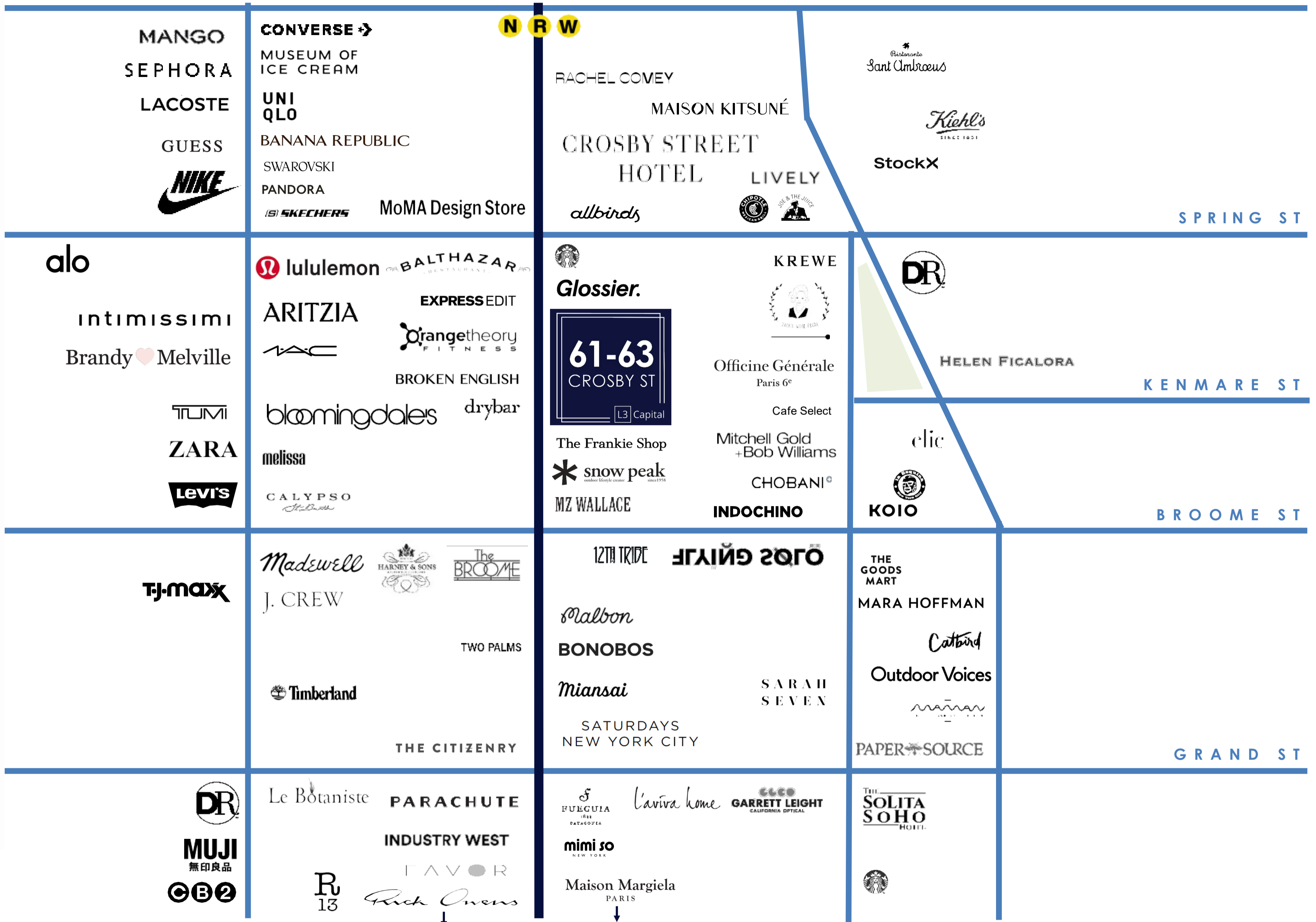
ICONIC  
SOHO  
TOWNHOUSE

BROADWAY

CROSBY

LAFAYETTE

PRINCE ST



# SOHO

WALK TIME

5-min

10-min

15-min

DAYTIME POP.

26,001

78,589

169,462

MEDIAN HH INCOME

\$104,902

\$100,020

\$100,021



## LOCATION

CROSBY ST – BETWEEN SPRING & BROOME

## POSSESSION

IMMEDIATE

## SIZE AVAILABLE

### TOTAL

**61 CROSBY** – 4,900 SF | **63 CROSBY** – 3,200 SF

### GROUND

**61 CROSBY** – 2,800 SF | **63 CROSBY** – 1,900 SF

### LOWER-LEVEL

**61 CROSBY** – 2,100 SF | **63 CROSBY** – 1,300 SF

## FEATURES

TOWNHOUSE SPACES

POTENTIAL FOR MULTI-LEVEL BUILD OUT

SKYLIGHT IN REAR (61 CROSBY ONLY)

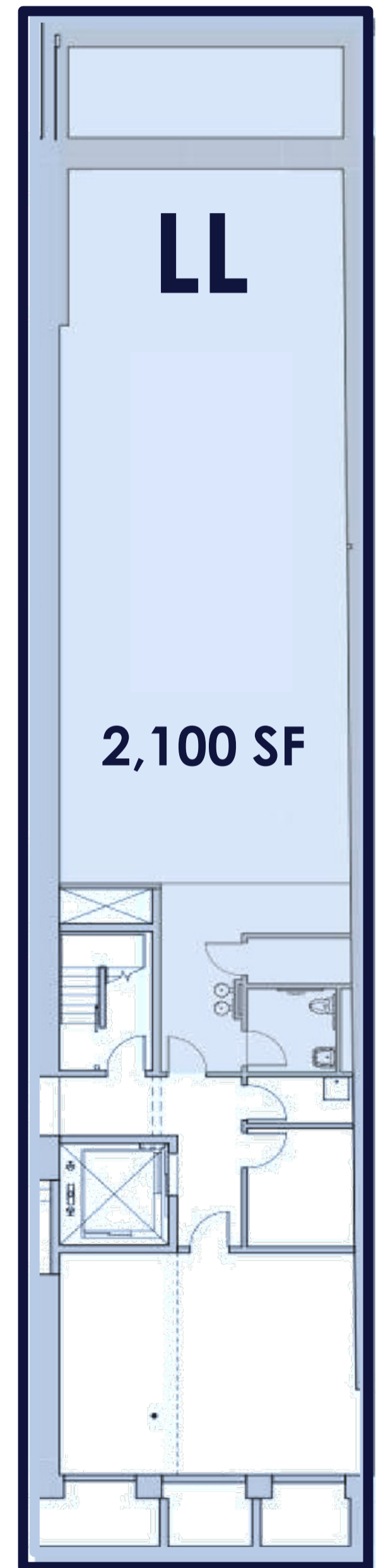
## FRONTAGE

UP TO 50' ON CROSBY ST

## CEILING HEIGHTS

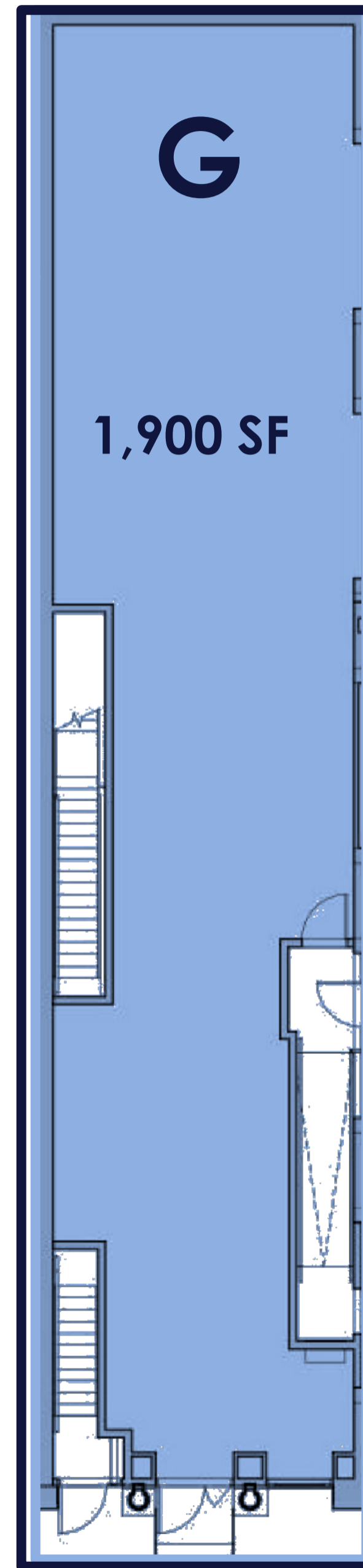
G: 14'

# 61 CROSBY ST



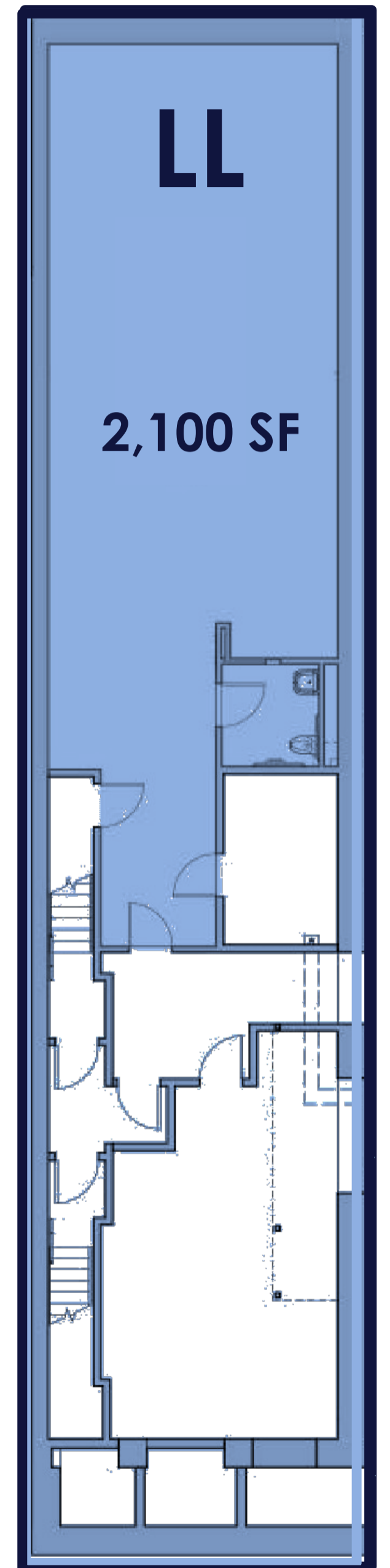
CROSBY STREET

# 63 CROSBY ST



1,900 SF

25 FT



2,100 SF

CROSBY STREET



61-63  
CROSBY ST  
L3 Capital



WWW.L3CAPITAL.COM