

92

N 6<sup>TH</sup> ST

L3 Capital







THE  
**WILLIAMSBURG**  
COLLECTION

L3 Capital





**LOCATION**

N 6<sup>TH</sup> ST. NEXT TO URBAN OUTFITTERS  
ACROSS FROM NIKE & SANTANDER CAFÉ

**POSSESSION**

FEBRUARY 2025

**SIZE AVAILABLE**

TOTAL – 10,864 SF (DIVISIBLE)

G – 3,700 SF

2<sup>ND</sup> – 3,700 SF

LL – 3,700 SF



**FRONTAGE**

Up to 50+ FT. ON N 6<sup>TH</sup> ST

**CEILING HEIGHTS**

G – 12 ft | 2<sup>ND</sup> – 11'



# THE WILLIAMSBURG COLLECTION

"L" TRAIN  
9.4M  
ANNUAL RIDERS

12,500  
PEDESTRIANS  
PER DAY

25,000  
PEDESTRIANS  
PER DAY



EAST RIVER  
EAST RIVER FERRY  
3M ANN'L RIDERS

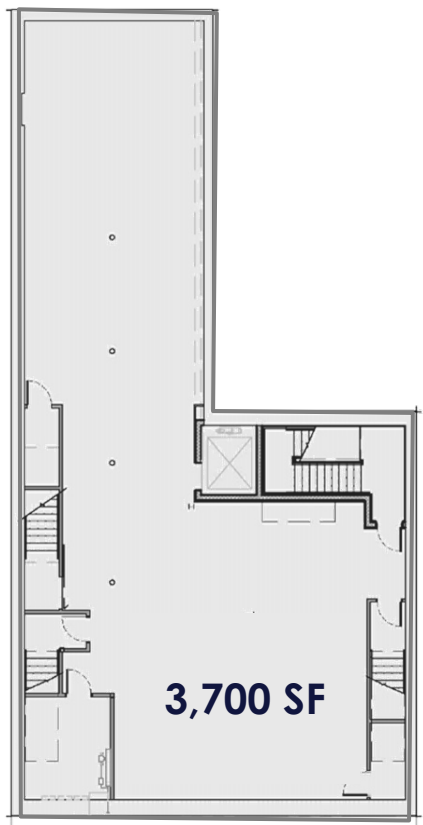
# THE WILLIAMSBURG COLLECTION

**92**  
N 6<sup>TH</sup> ST

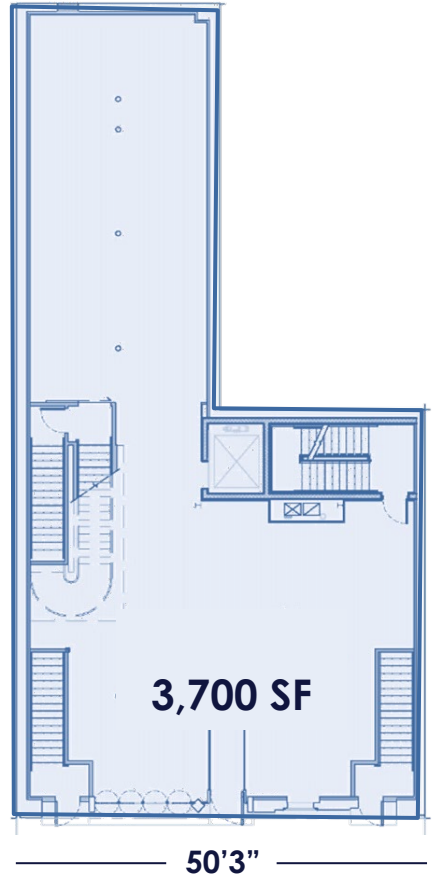
<b>N 6TH &amp; KENT DEVELOPMENT</b> Ground . . .14,100 SF Cellar . . .6,600 SF	<b>60 N 6TH</b> Ground . .4,500 SF Second . .6,850 SF	<b>168-170 WYTHE REDEVELOPMENT</b> Ground . .5,000 SF Second . .5,000 SF	<b>104-106 N 7TH DEVELOPMENT</b> Ground . .3,546 SF Second . .3,845 SF Third . .1,762 SF	<b>92-94 N 6TH</b> Ground . .3,700 SF Second . .3,700 SF Cellar . .3,050 SF	<b>108-112 N 6TH DEVELOPMENT</b> Ground . .5,890 SF Second . .6,330 SF Terrace . .4,110 SF Cellar . .3,220 SF	<b>132 BEDFORD DEVELOPMENT</b> Ground . .3,833 SF	<b>184-192 BEDFORD DEVELOPMENT</b> Ground . .7,060 SF Terrace . .4,350 SF Cellar . .5,159 SF	<b>200-206 BEDFORD DEVELOPMENT</b> Ground . .6,052 SF Second . .5,409 SF Terrace . .4,845 SF Cellar . .3,316 SF
--	---	--	---	--	---	--	---	---

IMMEDIATE AVAILABILITY  
 OCCUPIED: LEASED/LEASE OUT  
 LONG-TERM AVAILABILITY

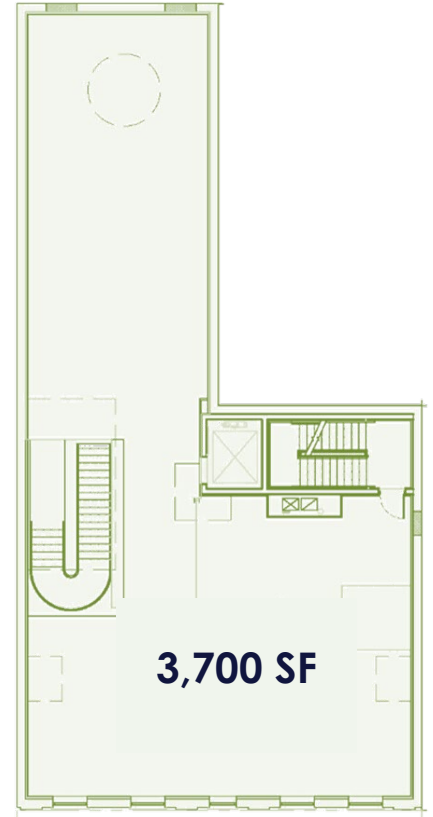




**LL**



**G**



**2<sup>ND</sup>**

N 6<sup>TH</sup> ST.



